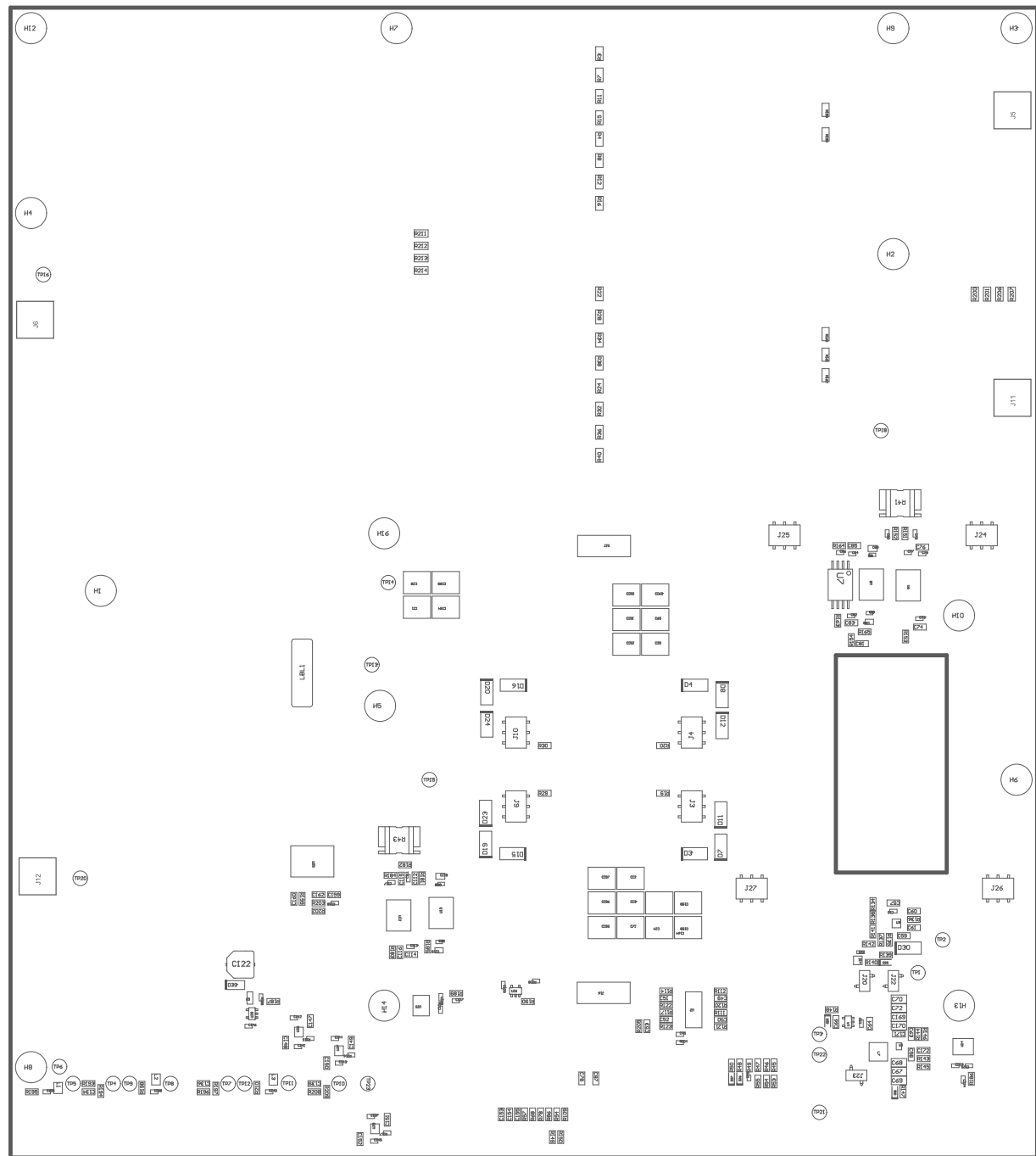


COMPONENTS MARKED 'DNP' SHOULD NOT BE POPULATED.
ASSEMBLY VARIANT: [No Variations]

| | | | |
|----------------------------------|---------------------------------|-------------------|---------------------------------|
| PCB VIEWED FROM TOP SIDE | BOARD #: TIDA-011012 | LV REV: E1 | SUN REV: Not in version control |
| | | | |
| PLOT NAME = Top Assembly Drawing | GENERATED : 03/06/2026 16:37:55 | TEXAS INSTRUMENTS | |

Z24 # These assemblies must comply with workmanship standards IPC-A-650 Class 2, unless otherwise specified.
Z23 # These assemblies must be clean and free from flux and all contaminants. Use of no clean flux is not acceptable.
Z22 # These assemblies are ESD sensitive, ESD precautions shall be observed.
Z21 # Install label in silkscreened box after final wash. Text shall be 8 pt font. Text shall be per the Label Table in the PDF schematic.



COMPONENTS MARKED 'DNP' SHOULD NOT BE POPULATED.
 ASSEMBLY VARIANT: [No Variations]

| | | |
|-------------------------------------|---------------------------------|---------------------------------|
| PCB VIEWED FROM BOTTOM SIDE | BOARD #: T1DA-011012-LV REV: E1 | SUN REV: Not in version control |
| | | |
| PLOT NAME = Bottom Assembly Drawing | GENERATED : 03/06/2026 16:37:55 | TEXAS INSTRUMENTS |